

brooks

World Class Precision Engineering

WASTE WATER & WATER TREATMENT

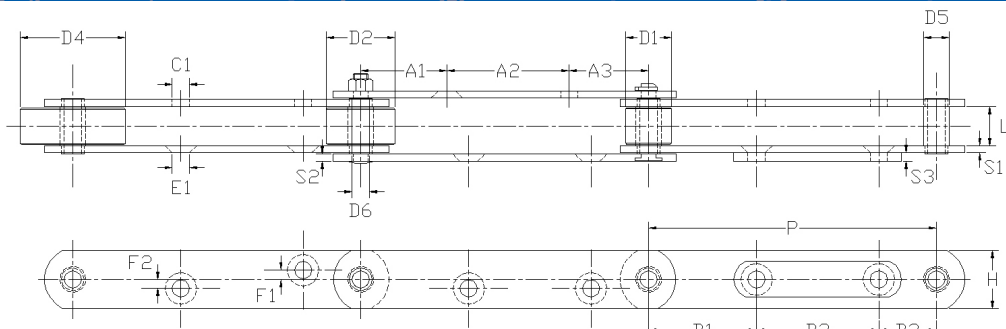
We are one of the leading global manufacturers for the water industry and have been for over 40 years. We have supplied standard, bespoke and engineered solutions to equipment manufacturers, site service specialists and directly to water authorities by offering a wide range of high quality chains, sprockets, slats and screens. We offer unparalleled technical support from the UK, North America and Far East, a 25000m² UK manufacturing facility plus a global rapid response service in emergency situations.

Our UK manufactured products are offered in a wide range of materials to suit our customers' requirements. The most common materials include carbon steel, 300 series stainless steel, 400 series hardened stainless steel, duplex and triplex stainless steels and engineering plastics. These products can also be coated prior to assembly in order to achieve a uniform coating on all components. The most common coating is zinc plating, although other coatings are available upon request.

To complement our engineered chains, we are also able to offer standard Imperial and Metric pitch chains, such as British Standard, M Series, ANSI and FV series along with all types of welded and integral attachment types. We can also offer any roller option such as bush only, small standard, large standard and flanged type from a wide range of materials.

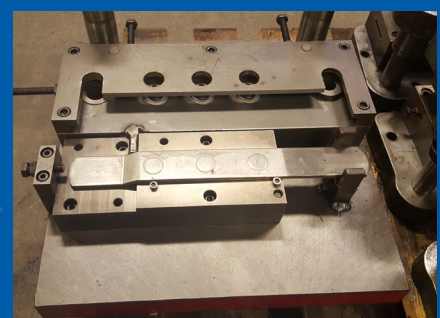
Brooks is an ISO 9001:2008 certified manufacturer.

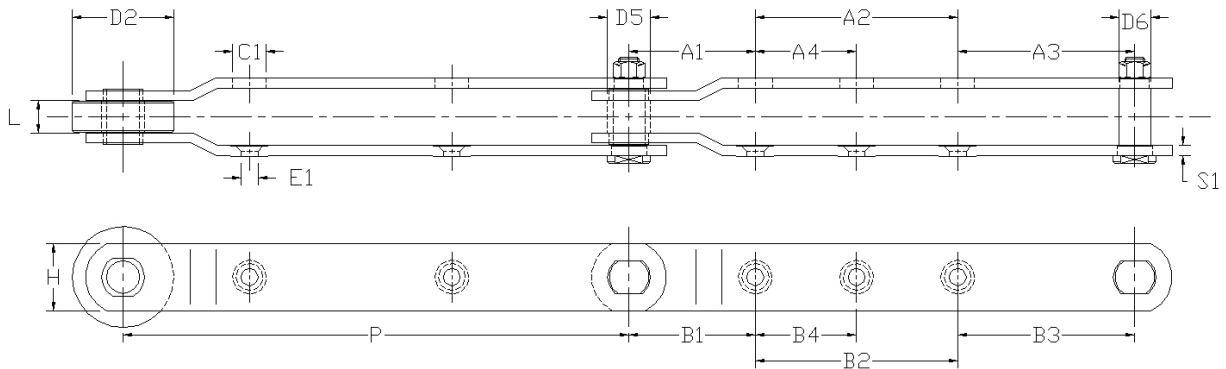
Fine, Course & Rake Screens | Bandscreen | StormStar | Elevators | Settlement Tanks | Scrapers



Standard Straight Link

Chain No.	P mm	L mm	D1 mm	D2 mm	D4 mm	D5 mm	D6 mm	H mm	S1 mm	S2 mm	S3 mm	A1 mm	A2 mm	A3 mm	B1 mm	B2 mm	B3 mm	F1 mm	F2 mm	C1 mm	E1 mm
SCW2188	200	27	31.75	/	/	18	12	40	5	5	6	/	/	/	40	120	40	/	/	/	12
SCW2189	200	27	31.75	/	/	18	12	40	5	5	6	75	85	40	75	85	40	/	/	12	12
SCW2245	203.2	19	/	47.6	/	25.4	19.05	40	5	5	/	50.8	101.6	50.8	76.6	85	41.6	/	/	19	9
SCW2247	203.2	19	/	47.6	/	25.4	19.05	40	5	5	/	96.6	65	41.6	96.6	65	41.6	/	/	19	9
SCW2248	203.2	19	/	47.6	/	25.4	19.05	40	5	5	/	69.85	63.5	69.85	69.85	63.5	69.85	/	6	19	9
SCW2281	300	29	/	/	100	25.4	19.05	50	8	5	/	105	90	105	105	90	105	10.5	5	13	13

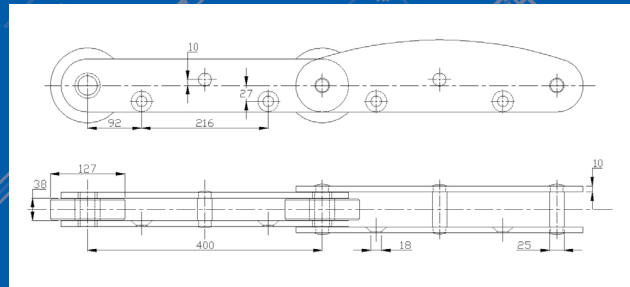
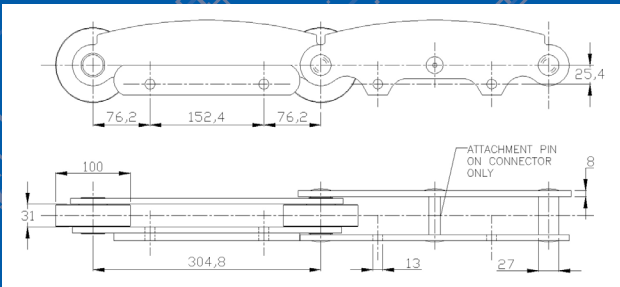




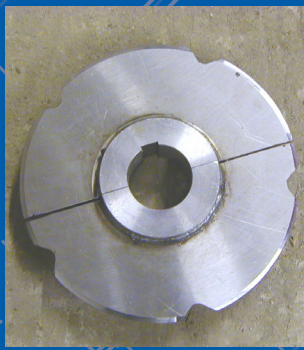
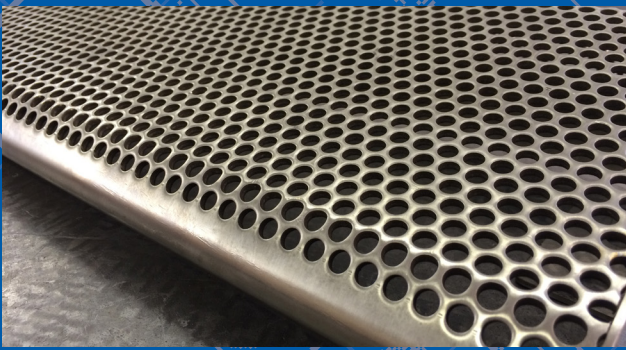
Crank Link

Chain	P mm	L mm	D2 mm	D5 mm	D6 mm	H mm	S1 mm	A1 mm	A2 mm	A3 mm	A4 mm	B1 mm	B2 mm	B3 mm	B4 mm	C1 mm	E1 mm
SCW1376	200	28	/	18	11.8	35	5	75	85	40	/	75	85	40	/	12	12
SCW1465	200	35	/	26	18	45	6.75	75	85	40	/	75	85	14	/	12	12
SCW1482	300	19	60	25	19	40	6	75	120	105	60	75	120	105	60	20	10
SCW1512	609.6	38.1	101.6	44.45	31.75	76.2	9.5	To Suit	To Suit	To Suit	/	To Suit	To Suit	To Suit	/	To Suit	To Suit

Special Application Chains



Ancillary Items



Head Office (UK)
117 Manchester Rd, Manchester M34 5UU, England

Malaysia Office
Brooks Andell Sdn Bhd, 30/32 PJU 3/49, Sunway Damansara, Petaling Jaya, Selangor, Malaysia, 47810,

USA Office
Brooks USA Inc, 2993 S. Oak Way, Lakewood, CO 80227, USA,

[Twitter.com/chain4conveyors](https://twitter.com/chain4conveyors)
 [Linkedin.com/company/conveyorchain](https://www.linkedin.com/company/conveyorchain)
 [Facebook.com/conveyorchain](https://www.facebook.com/conveyorchain)

Telephone +44 (0) 161 666 5000
Website www.chain.zone
Email chains@brooks.ltd.uk